

- ***Temporary or Permanent***
- ***Modular-Standardized***
- ***Quick Deployment***
- ***No Ground Penetration***
- ***Heights up to 140'***

### ***Lite-Site 20:***

The ***Lite-Site 20*** is a quick deploy cell site that fits entirely in a 20' x 20' area. The ***Lite-Site 20*** represents a temporary site although is certified for permanent placement. This versatile site can satisfy all communication and non-communication needs in a wide range of industries.

The entire ***Lite-Site 20*** can be installed in one day on prepared level ground such as compacted gravel or blacktop.

In some instances, the ***Lite-Site 20*** can help simplify zoning and permitting and accelerate system deployment to meet your construction deadline .

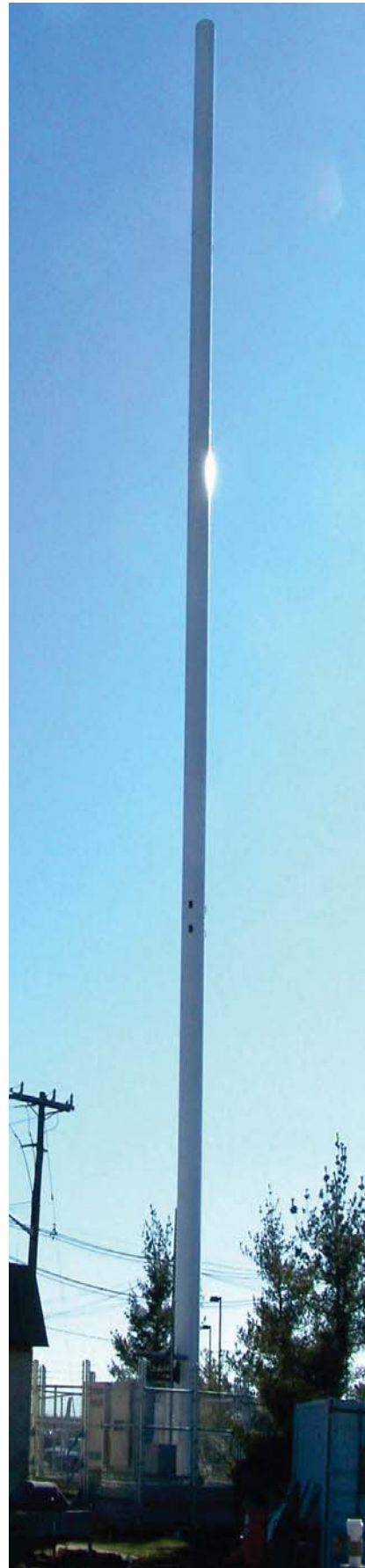
Fencing and ballast are available from stock with the ***Lite-Site 20***. The standardized ***Lite-Site 20*** base frame and standardized ***Lite-Pole*** monopoles are normally stock items that can be quickly shipped from inventory.

[WWW.CDMIWIRELESS.COM](http://WWW.CDMIWIRELESS.COM)

Creative Design and Machining

969 Griffin Pond Road, P.O. Box 773 Clarks Summit, PA 18411

Phone: 570.587.3077



### ***Lite-Site 20 Base Frame:***

The patented ***Lite-Site 20 base frame*** is a quickly assembled, bolt together foundation system that creates a 20' x 20' compound area. The ***Lite-Site 20*** base frame consists of a high strength steel frame filled with ballast that supports our standard monopoles and antenna mounts. The base frame acts as the *on grade* foundation for the entire structure. The ***Lite-Site 20*** base frame also acts as the platform for equipment and supports security fencing. The frame consists of three trays that bolt together to form the base, then filled with ballast to meet the required loading. Ballast is typically in the form of concrete block although other methods can be approved.

- **MODULAR**
- **TEMPORARY OR PERMANENT**
- **EASY ASSEMBLY**

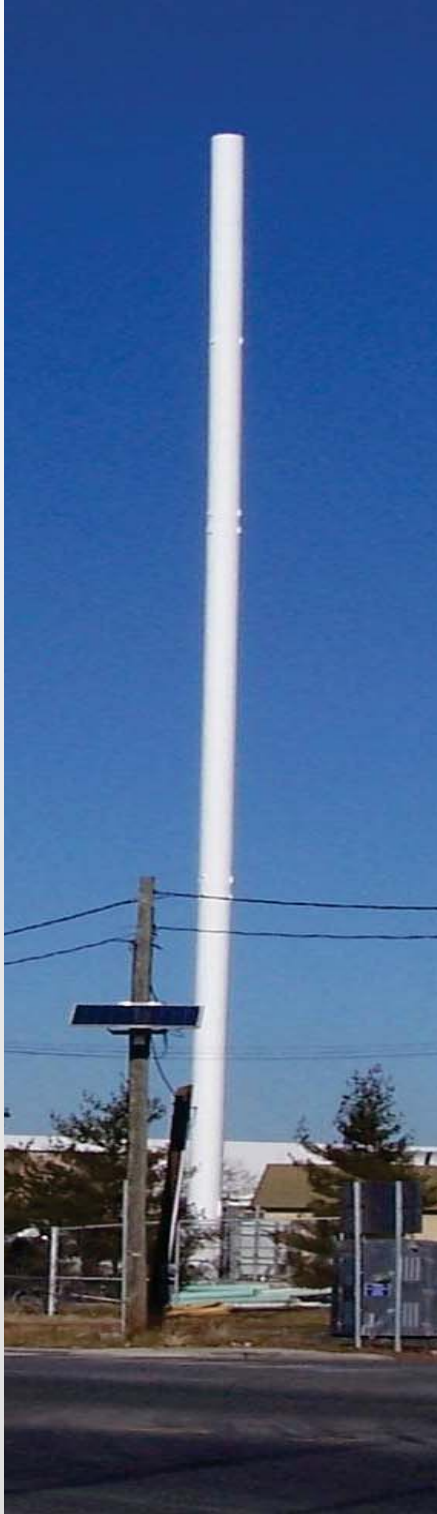
The ***Lite-Site 20 base frame*** is designed and approved for temporary or permanent placement. Each section of the base frame is symmetrical and can be placed in any orientation. The base frame is very easy to assemble.





### ***Lite-Poles:***

CDMI has created families of standardized monopoles to work with the Lite-Site. The Lite-Site 20 can utilize two styles of standard monopoles. Custom poles can be built to your specifications if required.



### ***Stealth Poles:***

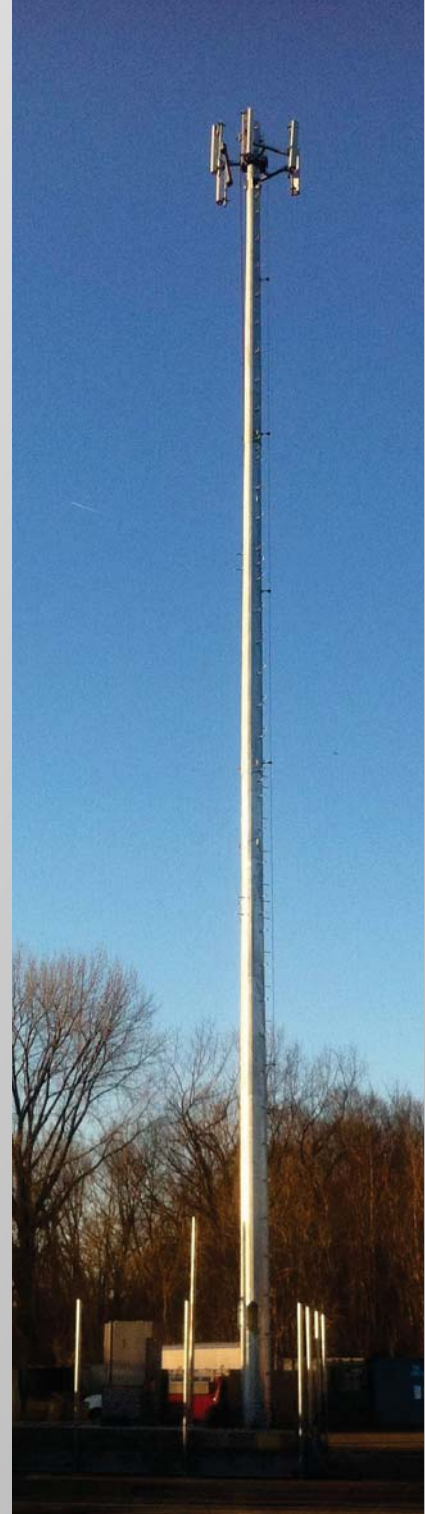
CDMI's Stealth Poles are available in 30" diameter and 24" diameter pole. Both poles are equipped to conceal antennas, microwave and electronic equipment behind shrouds. CDMI offers different styles of antenna mounting structures that ensures the proper fit of most equipment.

### ***Tapered Monopoles:***

CDMI can offer tapered monopoles equipped with safety and climbing.

### ***Custom Poles:***

CDMI can create custom poles to suit your specifications. We can also manufacture base adapter's to work with your used monopoles.



### **Ballast:**

CDMI suggests that preform concrete blocks be used for ballast. CDMI or a local concrete vendor may supply the concrete. In some instances other methods of ballast may be used to meet the weight requirements.



### **Fencing:**

Fencing options are available with the Lite-Site 20. Chain link fencing is available from stock. CDMI can also design fencing to support D-Mark enclosures. Other fencing options such as wood or vinyl may be built to suit.



### **Shipping**

The Lite-Site 20 ships from stock from our yard. The base frame, security fencing, ballast, hardware and poles can be packed together and shipped quickly. CDMI is conveniently located just off of numerous interstates for ease of transportation to your location.

