

Lite-Pole

STANDARDIZED MONOPOLES

1640



- ▶ *Simplifies zoning and permitting*
- ▶ *Accelerates system deployment*
- ▶ *Designed to meet construction deadlines*

Lite-Pole is:

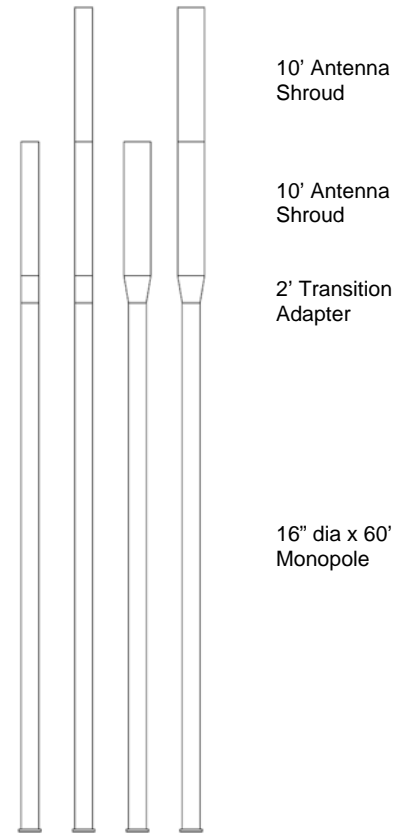
- **Pre-Engineered**
- **Standardized**
- **Made of Modular Parts**

Lite-Pole can be installed:

- **In One Day**
- **On the Lite-Site Base Frame**
- **As a Temporary or Permanent Cell Site**

The **Lite-Pole 1640** is an aesthetically pleasing affordable stealth cell site. Antennas are concealed within shrouds and mounted on top of an easy access transition adapter. The adapter can be quickly built to accommodate any manufacturers shroud bolt pattern. The shrouds can hold panel or microwave antennas. The Lite-Pole has been engineered to allow co-location. The diameter and quantity of shrouds can be determined by your site requirements.

The 16" diameter by 40'-0" long **Lite-Pole** from CDMI is designed to mount on the **Lite-Site 10** ballasted base frame. The **Lite-Site** and **Lite-Pole** are pre-engineered so that it is easy to determine if it will work for your loading requirements.



| Base Frame | POLE | TRANSITION | SHROUD | Overall Height | Rev. F mph | Rev. F tip defl. | Rev. G mph | Rev. G tip defl. |
|------------|------------------|------------|-------------------|----------------|---------------|---------------------|---------------|---------------------|
| 1'-6" | 16" dia x 39'-3" | 2'-0" | 16" dia. x 20'-0" | 62'-9" | 95 | 0.3 | 115 | 0.26 |
| 1'-6" | 16" dia x 39'-3" | 2'-0" | 16" dia. x 10'-0" | 52'-9" | 110 | 0.14 | 135 | 0.12 |
| 1'-6" | 16" dia x 39'-3" | 2'-0" | 24" dia. x 20'-0" | 62'-9" | 80 | 0.39 | 100 | 0.34 |
| 1'-6" | 16" dia x 39'-3" | 2'-0" | 24" dia. x 10'-0" | 52'-9" | 100 | 0.16 | 125 | 0.11 |

The above are approximate wind speeds based on typical shroud structures. The wind speeds and deflections are based on the loading requirements of EIA/TIA-222-F and EIA/TIA-222-G. Appropriate safety factors have been applied based on code requirements for use with the Lite-Site 15 Ballasted Base Frame. The above chart is to be used only as a quick reference guide. It is recommended that all loading be approved by a certified PE.

969 Griffin Pond Road • P.O. Box 773 • Clarks Summit, PA 18411
 Phone (570) 587-3077 • Fax (570) 587-3075

cdmiwireless.com

