

Lite-Pole STP

STANDARDIZED MONOPOLES



- ▶ *Simplifies zoning and permitting*
- ▶ *Accelerates system deployment*
- ▶ *Designed to meet construction deadlines*

Lite-Pole is:

- Pre-Engineered
- Standardized
- Made of Modular Parts

Lite-Pole can be installed:

- In One Day
- On the Lite-Site Base Frame
- As a Temporary or Permanent Cell Site

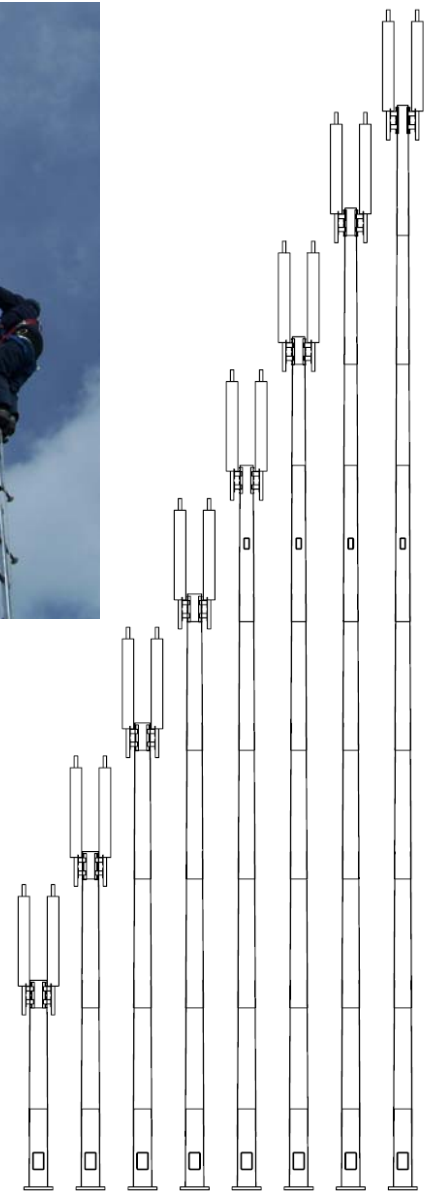
The **LP-STP** (Steel Tapered Monopole) can be easily assembled to any height up to 65 feet. The monopole is made from 9' long round tapered steel sections that are slip jointed together. The maximum weight of any section is less than 350 pounds so they can be handled without heavy equipment.

The entire monopole can be delivered on one pallet for challenging site locations. The modular design is ideally suited for transport by small trucks and trailers, cargo containers or aircraft. The **Lite-Site** base frame and **LP-STP** are able to be shipped in quantity by cargo container.

The **LP-STP** has one large lower and two cable exit ports at 37' elevation standard. Cables can exit at the top of the monopole or through the cable exit ports. There are optional removable climbing ladders and safety lines. Antenna mounts can be attached at any elevation.

The **Lite-Site** and **Lite-Pole** are pre-engineered so that it is easy to determine if it will work for your loading requirements.

The pre-engineered **Lite-Pole** is a quick delivery, affordable, aesthetically pleasing cell site that can be installed in one day as a temporary or permanent cell site.



969 Griffin Pond Road • P.O. Box 773 • Clarks Summit, PA 18411
Phone (570) 587-3077 • Fax (570) 587-3075

cdmiwireless.com

