

CDMI WIRELESS

Lite-Site

QUICK DEPLOY CELL SITES

CDMI Wireless - The trusted name in ballast foundations and towers since 1996.

Creative Design and Machining Inc., incorporated in 1993, as a supplier of machined parts, mechanical assemblies and a designer and manufacturer of custom machinery. Creative Design started CDMI Wireless (CDMI) product line in 1996 dedicated to specialized structural steel design, welding and fabrication for wireless communication infrastructure products. CDMI is known for its high quality and quick delivery.

CDMI's Lite-Site product line has been providing carriers a solution to extend or maintain coverage and quickly adapt to the ever changing world of wireless communications. Whether a temporary site or a permanent site, CDMI has a solution to get you up and running.



CDMI Wireless
Creative Design & Machining Inc
969 Griffin Pond Rd
South Abington PA, 18411
570.587.3077
CDMI@Cdmewireless.com

CDMI's Lite-Site has been the go to solution for both temporary and permanent site deployments in regions all over the USA. Lite-Sites have a high loading capacity and small footprint which makes it ideal where restored or extended cell coverage is needed. Typical applications are events requiring extra capacity; water tank and building maintenance where antennas need relocating; disaster recovery and relief and any non-penetrating soil applications.

The lack of guy wires and parking lot size footprint opens up your real estate and site acquisition possibilities to extended cellular coverage and capacity in areas not previously thought viable. Don't settle for less when Lite-Site can get you back completely – and fast! Deploy the antennas that are going to suit your needs with the Lite-Site.



Lite-Site Ballast Foundations

The Lite-Site Base Frame is the on-grade foundation system for the Lite-Site package. Three trays and four channels bolt together to form the base. One tray contains the base plate where the monopole attaches and can be placed on any side or center of the base frame assembly. The trays are filled with pre-formed concrete ballast that create a level floor for mounting equipment.

Each of the Lite-Site family of base frames creates less than 1500 psf on the ground. Normally no geotechnical investigation is required when deploying the Lite-Site. Blacktop, concrete pads, or prepared level soil are all common areas to set the base.

The Lite-Site foundations are all identical in how they are assembled and scale in size from 10' x 10' assembled footprint to 25' x 25' assembled footprint. The Lite-Site foundations can be assembled in a few hours and the entire Lite-Site structure can be assembled or dismantled in less than a day.

Lite-Site 10

10' x 10' Footprint, Pole Heights 75' +



Lite-Site 15

15' x 15' Footprint, Pole Heights 100' +



Lite-Site 20

20' x 20' Footprint, Pole Heights 150' +



Lite-Site 25

25' x 25' Footprint, Pole Heights 175' +



Lite-Pole Monopoles

CDMI has created families of standardized monopoles to work with the Lite-Site base frame foundations. Lite-Poles are stocked items, available in steel tapered slip joint and external flanged monopoles. Custom poles can be built to your specifications if required.

Steel Tapered Monopoles

CDMI has a family of slip joint steel tapered monopoles to work with the Lite-Site base frame foundations. CDMI stocks standard sized steel tapered monopoles for quick deployment.

LP-STP22

The LP STP22 (Steel Tapered Monopole) works with the Lite-Site 10 foundation. The LP-STP22 is a build to suit pole and is 22" diameter at the base.

LP-STP30

The LP-STP30 (Steel Tapered Monopole) works with the Lite-Site 15 foundation and can be assembled to heights up to 100'+ in increments of 25'. Climbing and Safety come standard.

LP-STP36

The LP-STP36 (Steel Tapered Monopole) works with the Lite-Site 20 foundation and can be assembled to heights up to 150' in increments of 25'. Climbing and Safety come standard.

LP-STP46

The LP-STP46 (Steel Tapered Monopole) works with the Lite-Site 25 foundation and can be assembled to heights up to 175'+ in increments of 25'. Climbing and Safety come standard.

External Flanged Pipe Monopoles

CDMI has created families of standardized external flanged bolt together monopoles to work with the Lite-Site. These monopoles come in standard 50' and 25' lengths. These stock monopoles can be configured to achieve different heights in 25' increments.

LP-BTP30

The LP-BTP30 (Bolt Together Pole) works with the Lite-Site 15 foundation. The pole lengths are 25' sections and can be deployed from 25' to 100' in 25' increments. Climbing and Safety are standard.

LP-BTP36

The LP-BTP36 (Bolt Together Pole) works with the Lite-Site 20 foundation. The pole lengths are 50' and 25' sections and can be deployed from 50' to 150' in 25' increments. Climbing and Safety are standard.



Ballast

CDMI has designed the ballast block to sit inside the foundation while creating a level pad to mount equipment when installed. CDMI stocks ballast for the Lite-Site foundations, however a local concrete vendor may supply the ballast. In some instances, other methods of ballast may be used to meet the weight requirements.

Engineering analysis is required on all items used as ballast other than the recommended preform concrete blocks. Contact CDMI for further details.



Security Fencing and Access Stairs

CDMI has designed quickly installed security fencing and drop in place access stairs that can be utilized with each Lite-Site foundation. The Security Fencing consists of 11 pre fabricated fence panels and a swing gate. The fence panels bolt directly to the ballast block. The access stairs and swing gate can be mounted on any side or edge of the foundation.



Freight

CDMI works with industry leading logistics companies to ensure smooth delivery of the Lite-Site package. Often times we ship direct to site for crane appointments and can easily schedule trucks for timed deliveries.



Site-Acquisition

The Lite-Site opens up opportunities for site locations! The Lite Site is a great tool in the site acquisition tool box to get your sites online quickly. The small compact compound area of the Lite Site family of products helps gain access to those difficult sites from parking lots to mountain tops. With no ground penetration, any lot is a potential cell site, whether brownfield or historic land, the Lite Site pulls out the STOP signs to site acquisition. If acquisition of a permanent site is still not possible in your search ring, the Lite Site can be used as a temporary solution returning value in terms of coverage and customer satisfaction. A permanent Lite Site may be allowed following the positive attributes of its temporary placement.



Real Estate

The compound area of the Lite Site can be as little as ten feet square providing value at the leasing stage. With no ground penetration, decommissioning of the site is quick and painless. CDMI's multi-carrier poles, with co-location, add potential value and can increase revenue. Getting sites through zoning approval is often a pain staking process. The Lite-Site has appealing features that can win over zoning officials.



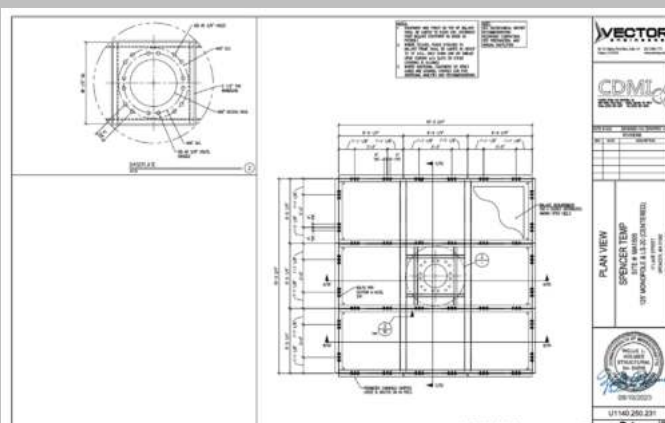
Construction

CDMI's Lite-Site simplifies the construction process. The entire foundation and monopole can be installed in one day. The Lite-Site's standardized design takes the guess work out of assembly and installation. With the on-grade foundation, no ground penetration is required. This eliminates the need for costly and time consuming site preparation and foundation work. With loading of less than 1,500 psf no geotechnical investigation is required.



Engineering

CDMI Wireless has teamed up with Vector Structural Engineering Firm for analysis of Lite-Site Quick Deploy Cell Site Systems. Since each Lite-Site deployment can be different, its best to check with CDMI if the Lite-Site foundation and pole can support your loading in a specific location. CDMI and Vector Structural Engineers can quickly determine If your Lite-Site will work for your application.



CDMI



Lite-Site

QUICK DEPLOY CELL SITES



CDMI Wireless

Creative Design & Machining Inc.

969 Griffin Pond Rd

South Abington PA, 18411

570.587.3077

CDMI@cdmwiweless.com

